

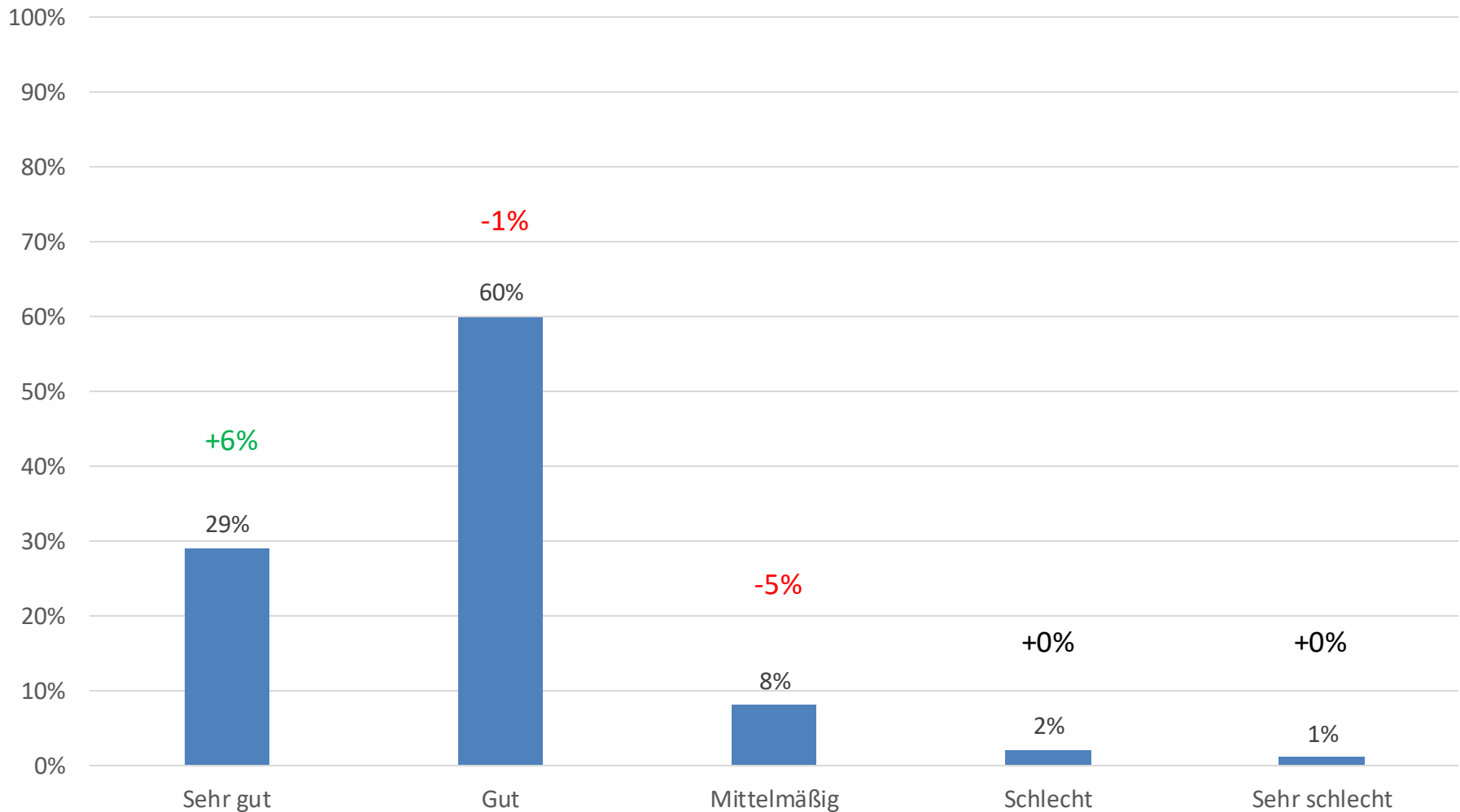


Umfrage Ende 1. Semester HWS23/24

Fachschaft BWL

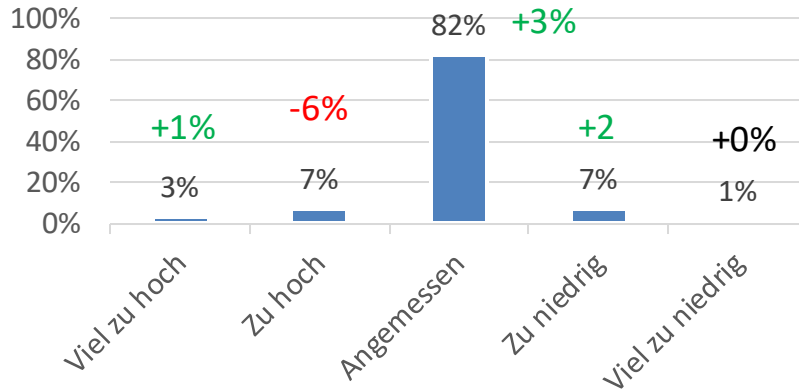
11.03.2024

Wie bewertest Du dein Studium an der Universität Mannheim?

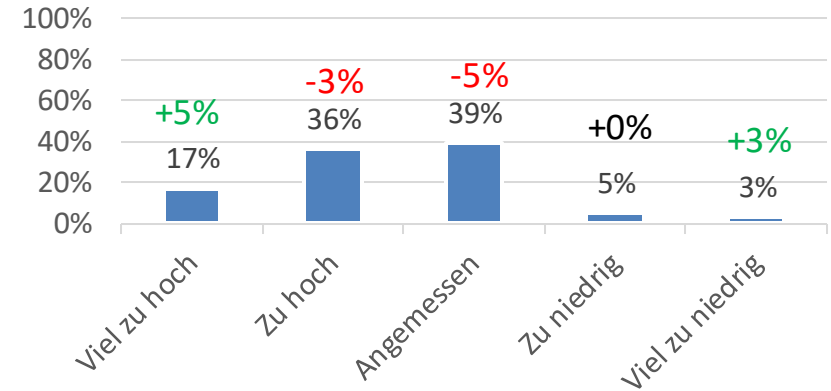


Verhältnis Lernaufwand zu ECTS Anzahl

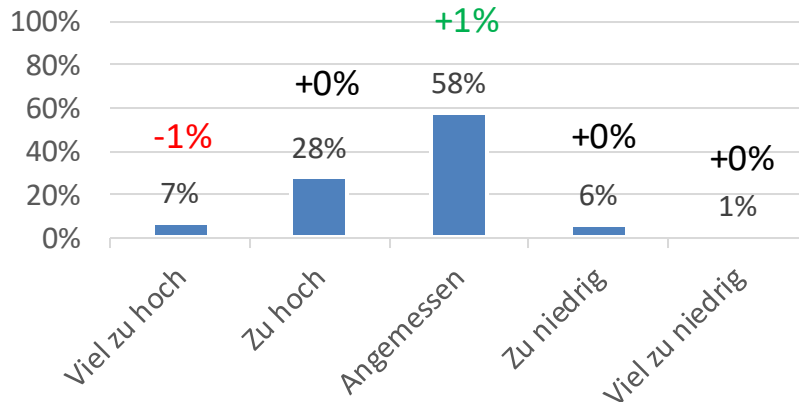
CC 301 Analysis



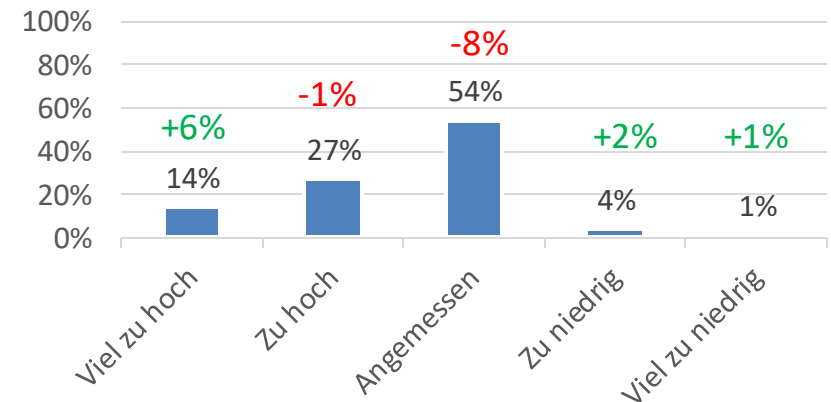
ACC 300 Accounting



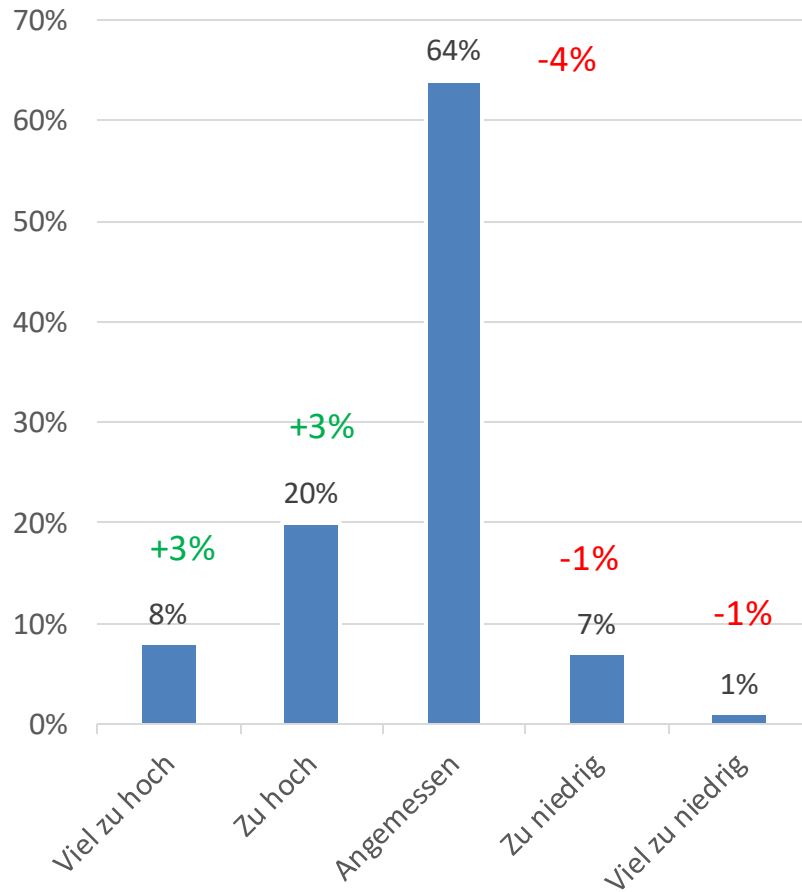
MAN 301 Management



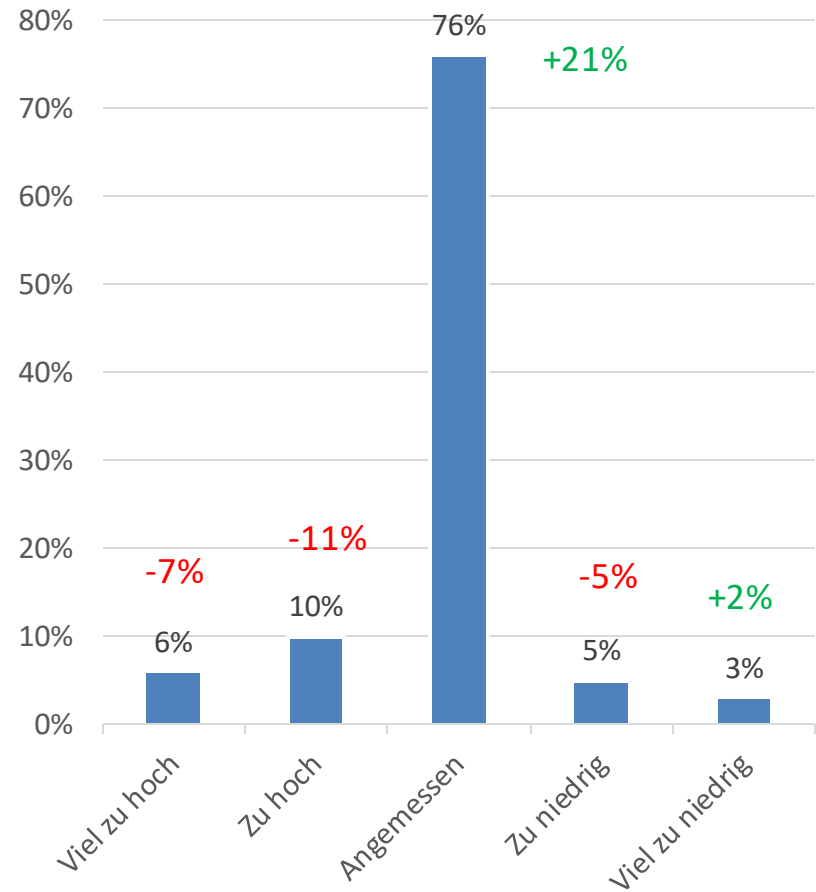
ECO 301 GVWL



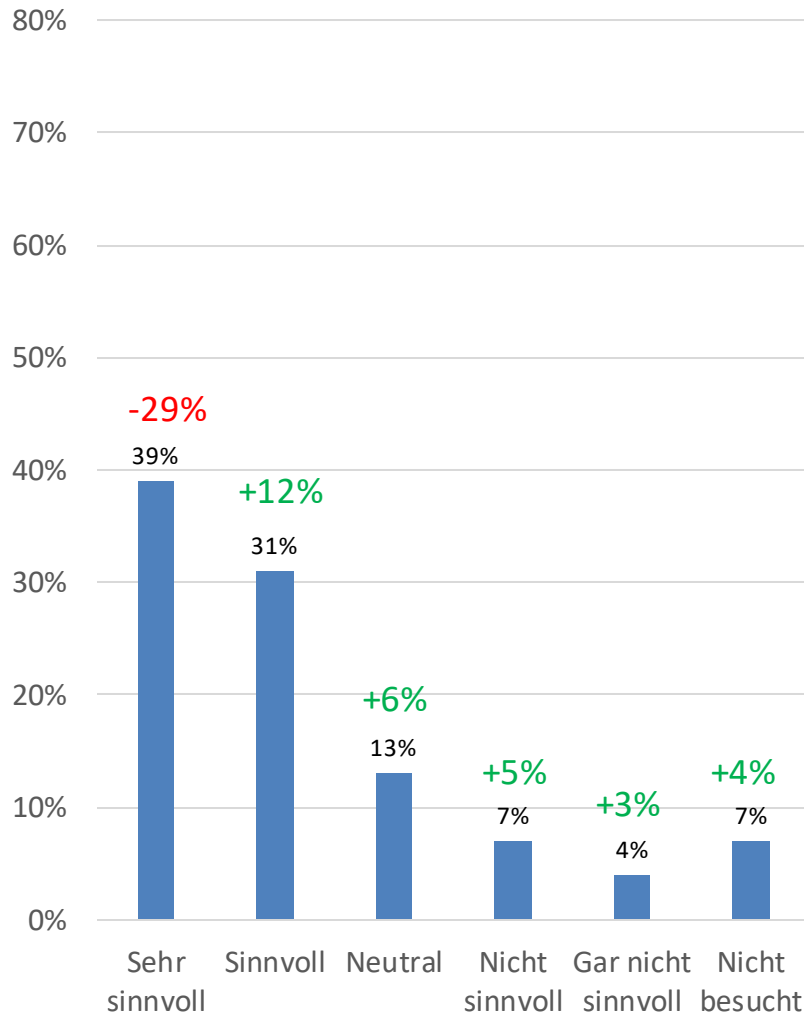
CC 302 Finanzmathematik



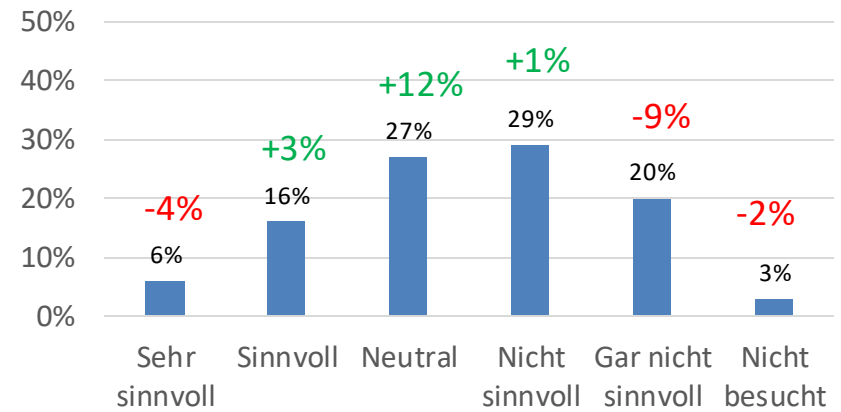
CC 303 Quantitative Methoden



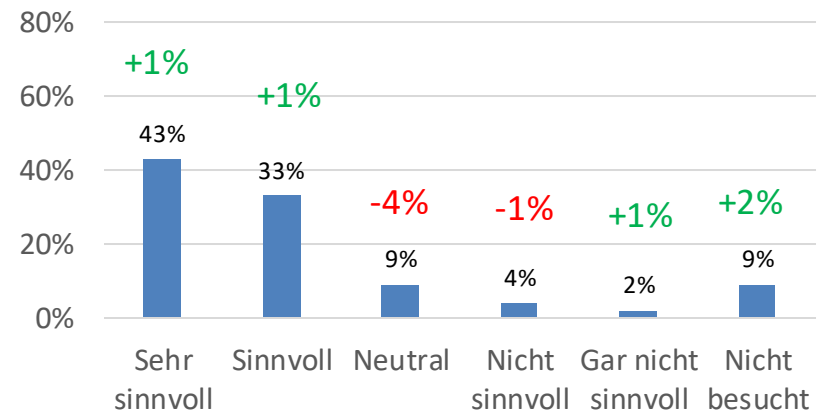
Analysis Übung



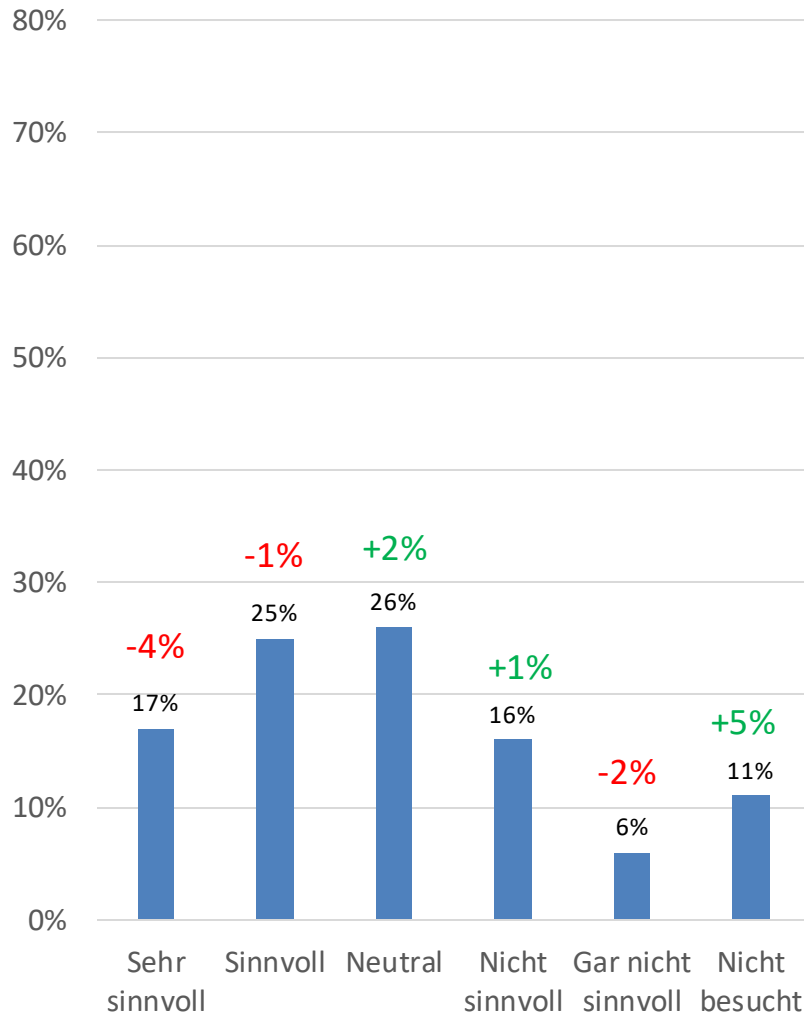
Accounting Übung



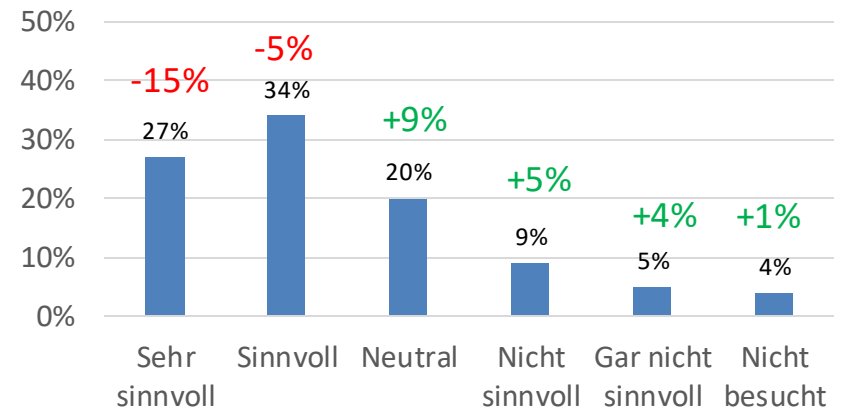
Accounting Tutorium



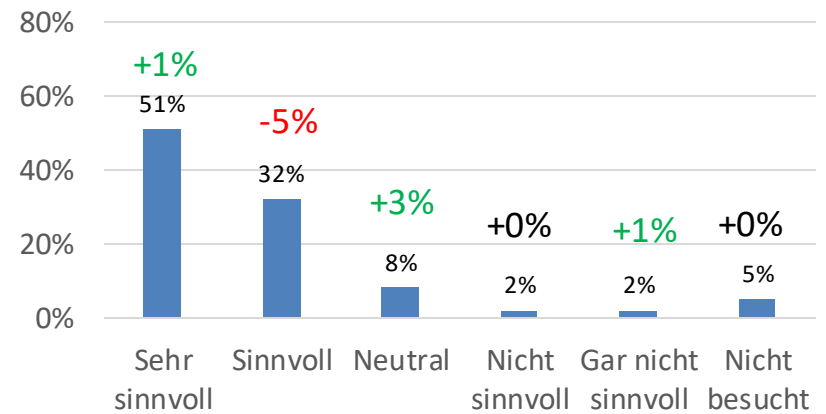
Management Übung



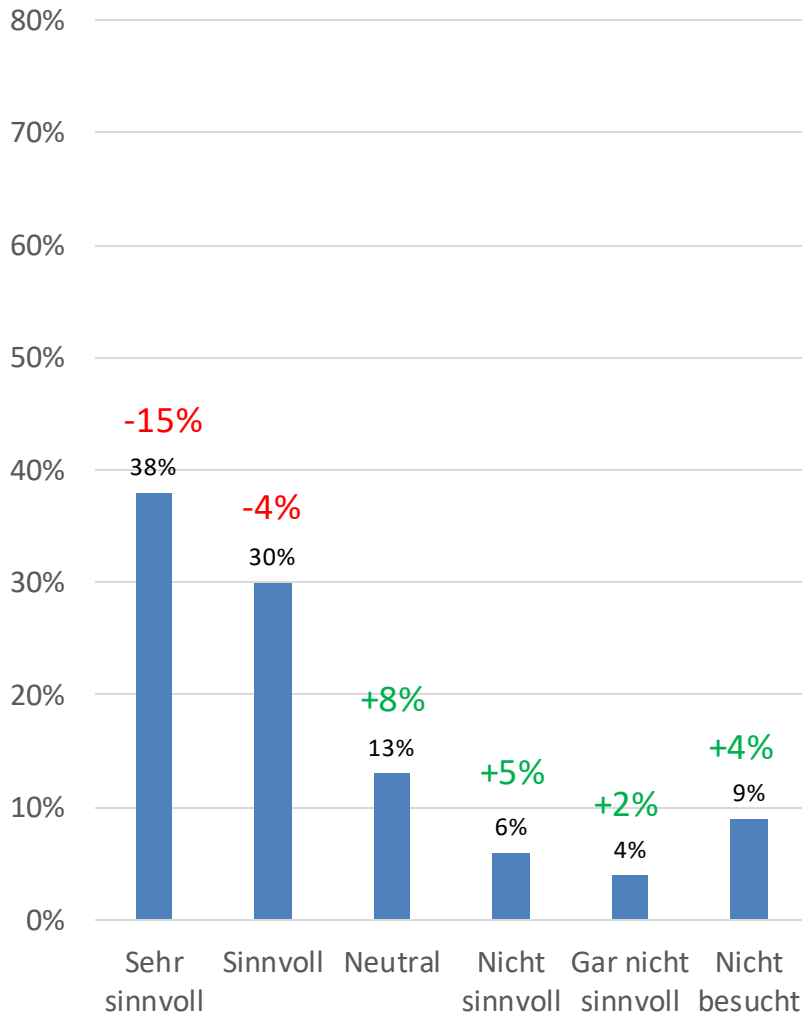
FiMa Übung



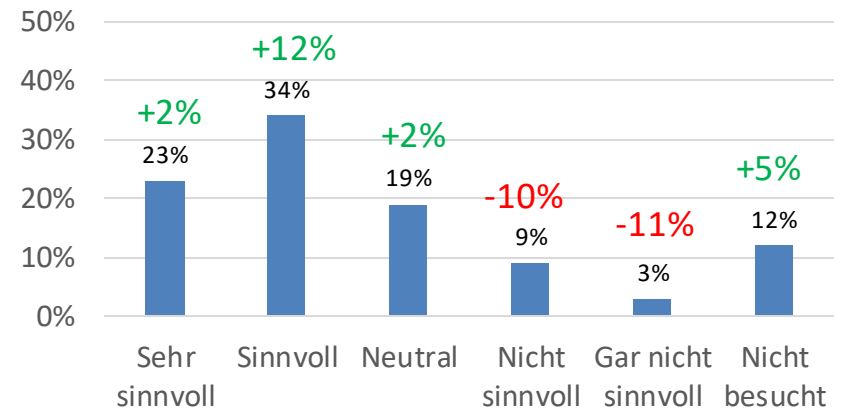
FiMa Tutorium



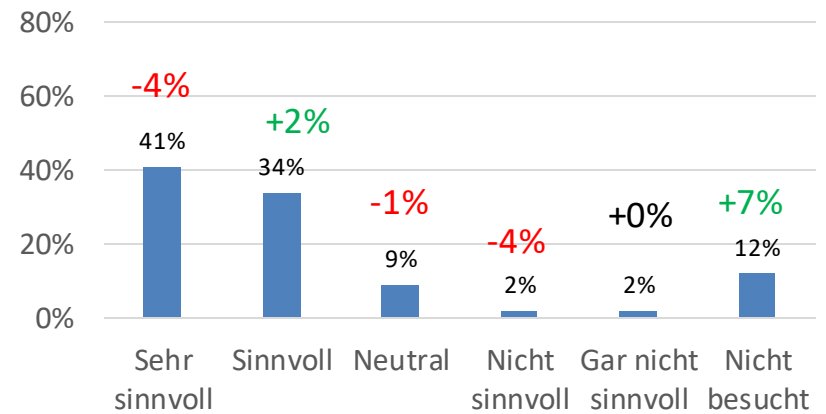
GVWL Übung



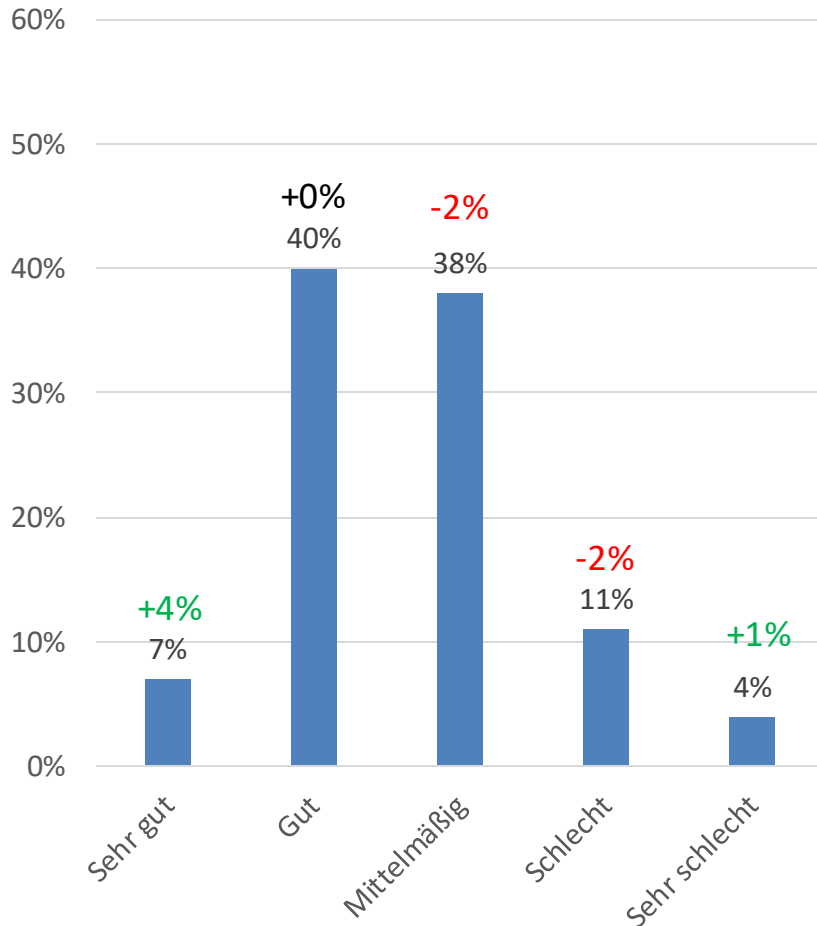
QM Übung



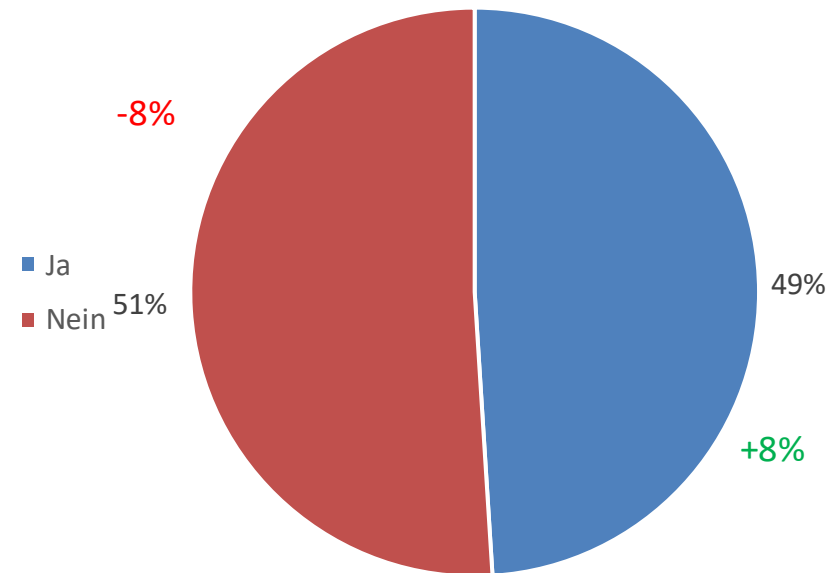
QM Tutorium



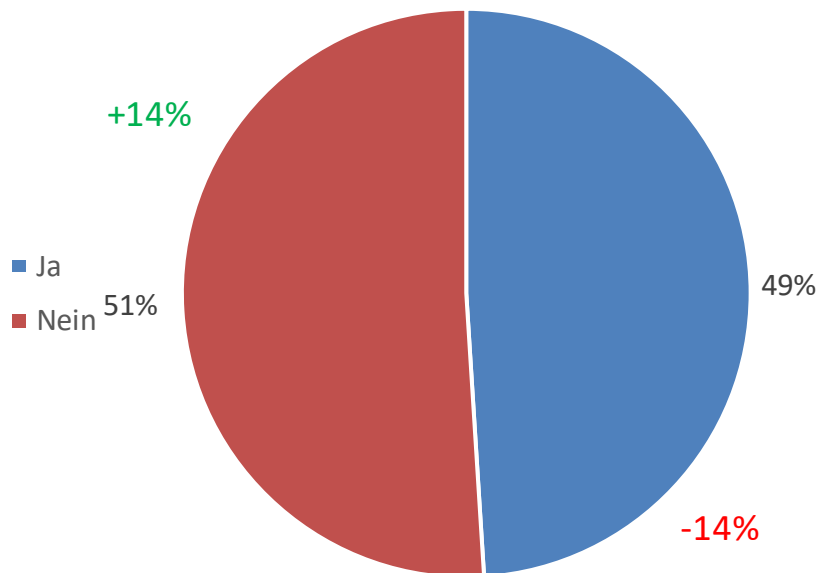
Wie bewertest Du das Angebot an alternativen Lernmethoden?



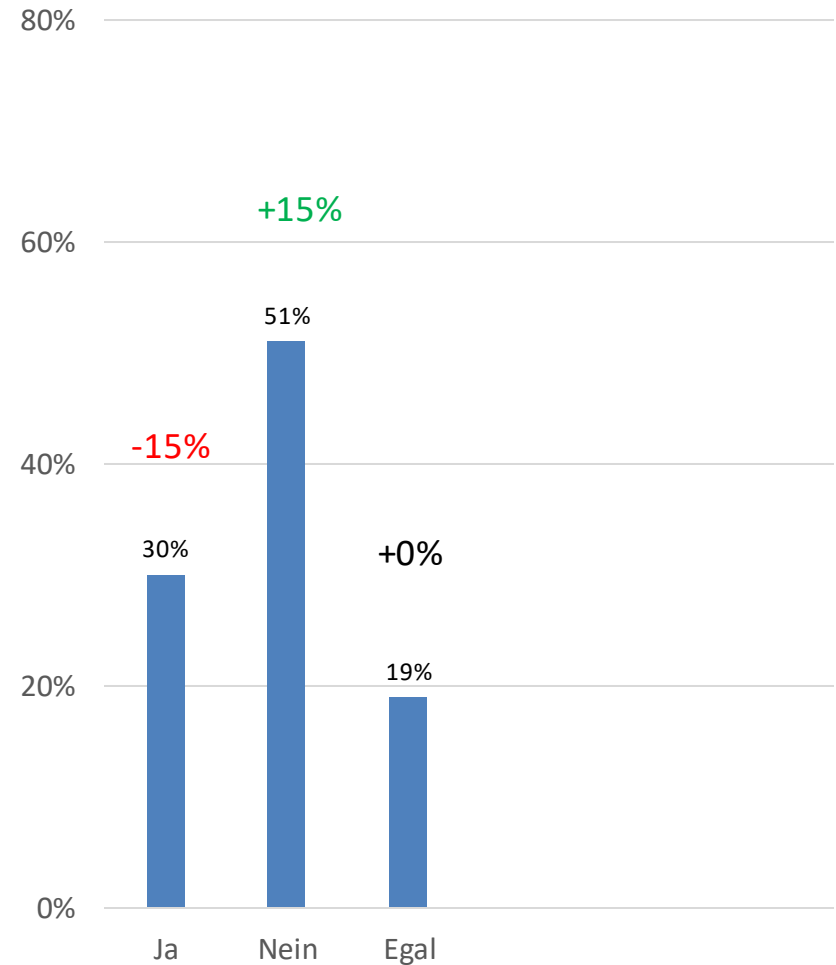
Größeres Angebot an alternativen Lernmethoden?



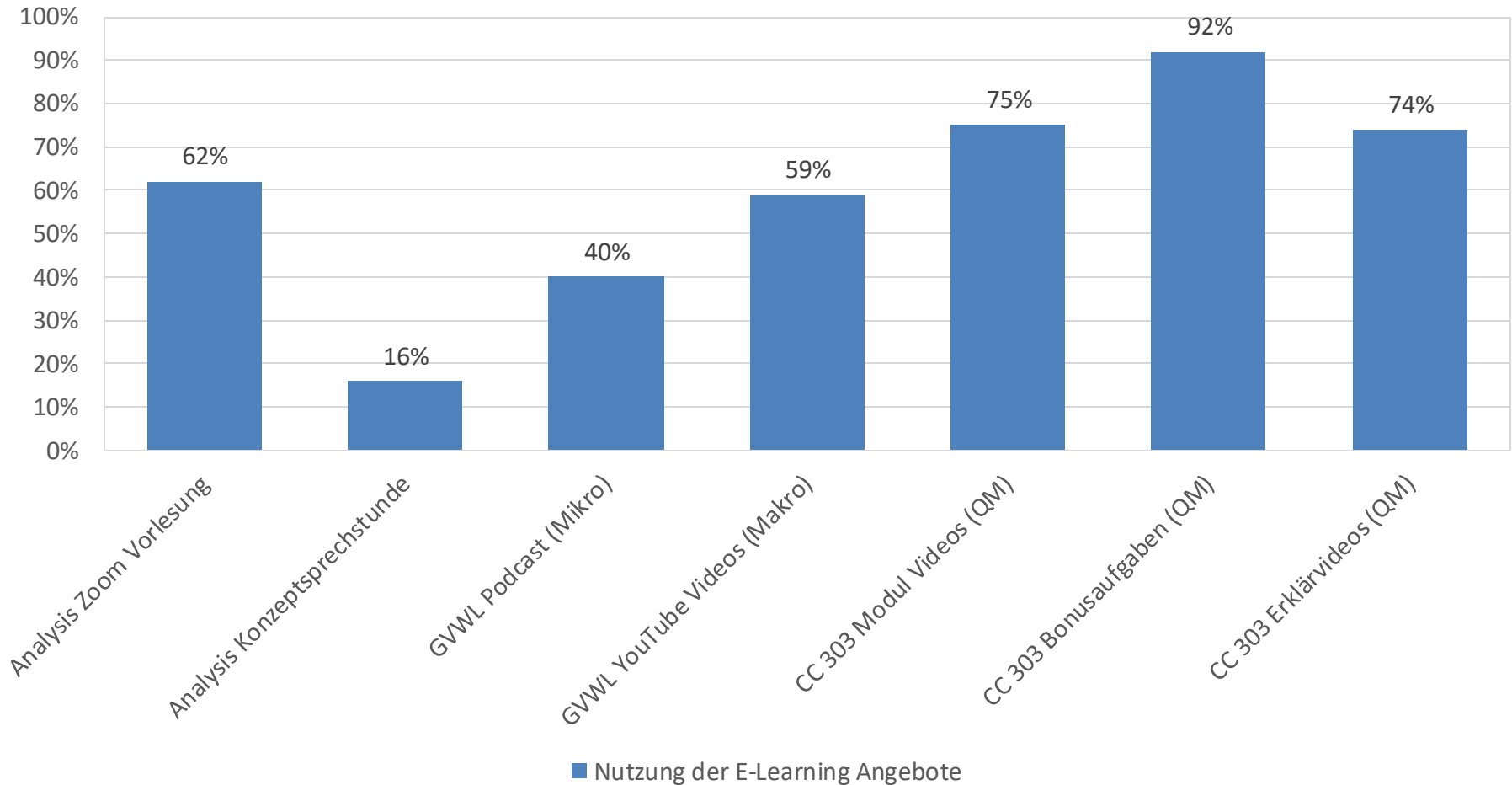
Wünschst Du dir allgemein mehr Blockveranstaltungen?



Wünschst Du dir Klausuren im Open Book Format?



Welche der E-Learning Angeboten hast Du im vergangenen Semester genutzt?





Vielen Dank!